



## City Link, Hessel Street, Salford

£925 PCM

The centrepiece of this two-bedroom property is the open plan kitchen/lounge complete with tiled kitchen area and large windows which truly brings this apartment to life. The bedrooms are nice sized doubles so you'll be able to kick your shoes off after a long day, stretch out and enjoy the peaceful surroundings. This spacious property also benefits from soft carpets and a nice sized bathroom in a lovely white finish.

City Link is also just opposite the bus stop and the Weaste Metrolink stop. MediaCityUK is just a stone's throw away and travelling to and from the city centre is an absolute breeze.

If you're interested in having a closer look, or have any questions, do get in touch. And just so you know, the pictures for this apartment are for marketing purposes only. The internal fixtures, fittings and furnishings may vary.

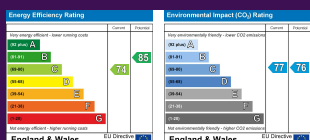
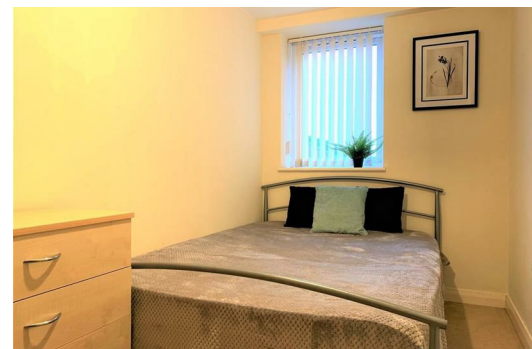
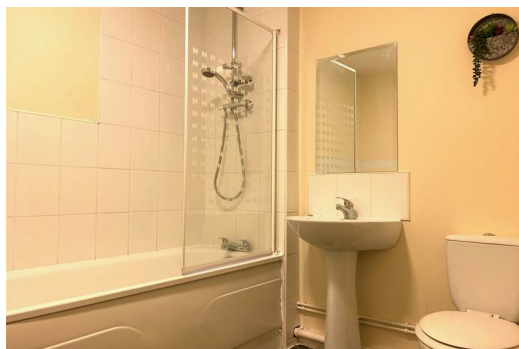
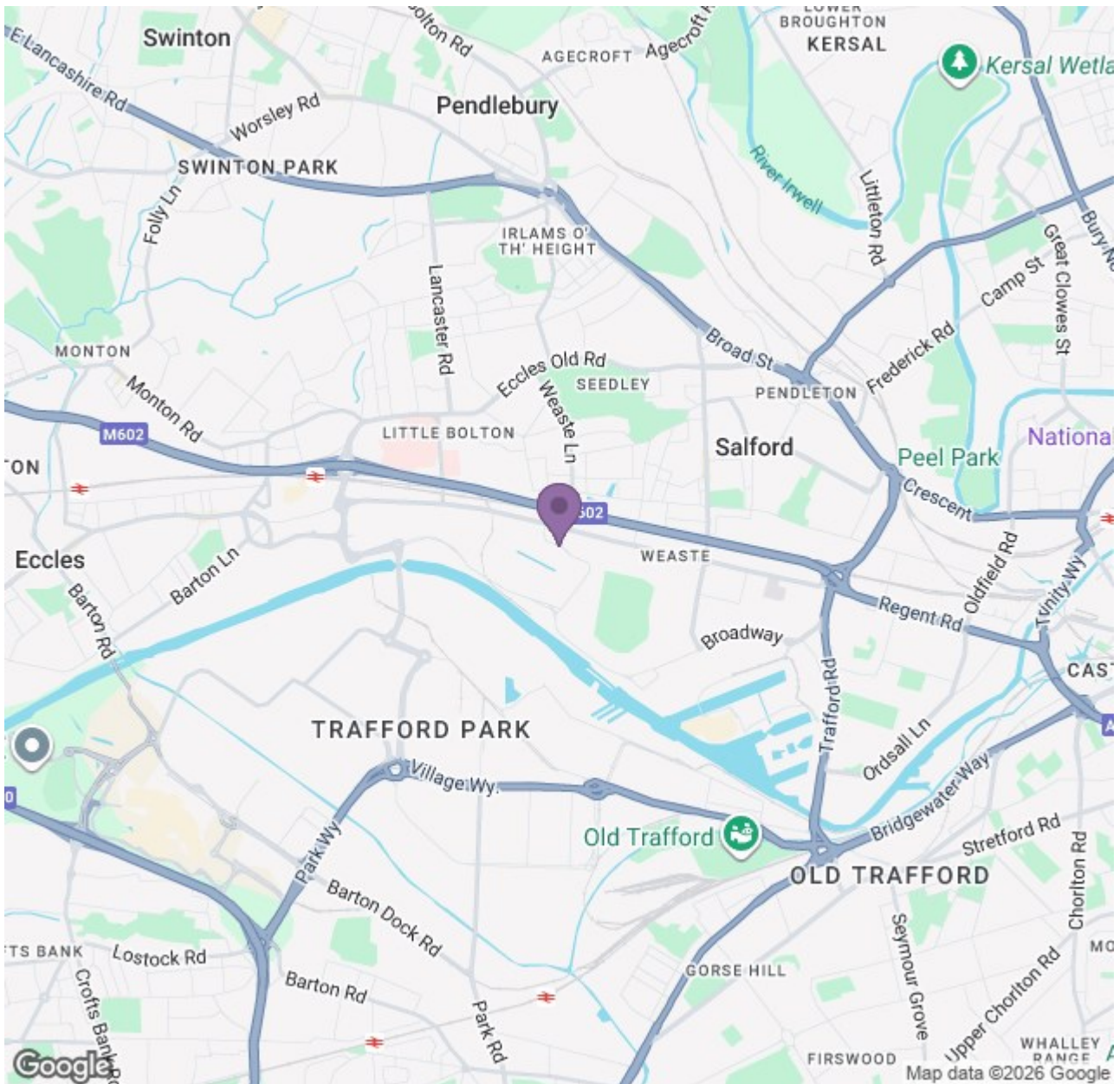
Available 26th January 2026  
Deposit: £1060  
Council Tax Band: B  
12 Month Tenancy





# Ascend

Built on higher standards



# Ascend

Built on higher standards